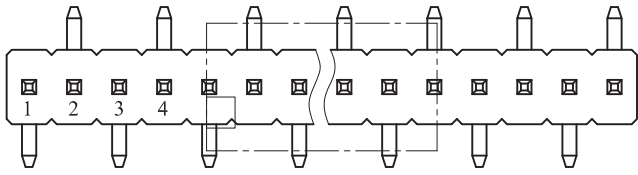
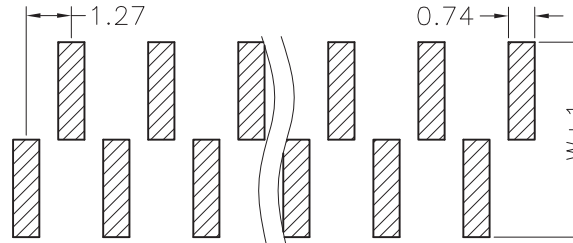


RoHS compliant

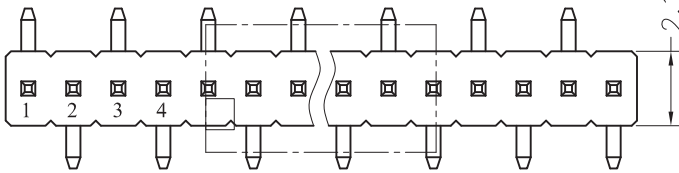
REVISION DATA				
SYM	ECN	DESCRIPTION	DATE	APPROVED



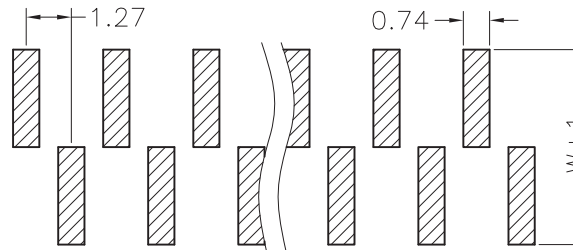
B Type



NOTES:
 Current Rating:1AMP
 Contact Resistance:20mΩ max
 Withstand Voltage:500V AC/DC
 Insulation Resistance:1000MΩ min
 Operation Temperature:-40°C to +105°C
 Contact Material:Brass
 Contact plating:Au or Sn Over Ni
 Insulator Material:PA6T+30%GF(UL94V-0)



A Type



HOW TO ORDER

PC10 - S XX M XX - B-D-W - X - X

No. of Pins per Row:01-50Pins

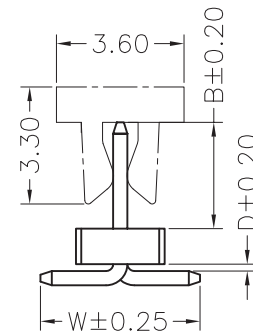
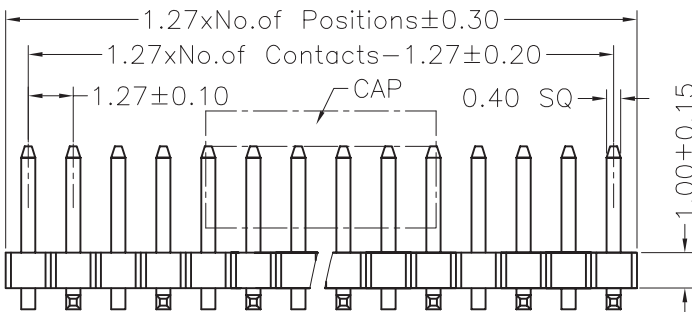
PCB Layout:
 A:A Type
 B:B Type

Package Type:
 A:Tray
 B:Tube
 C:W/Cap in Tube
 D:W/o Cap in Tape & Reel
 E:W/Film in Tube
 F:W/Film in Tape & Reel
 R:With Cap in Tape & Reel
 G:Bag

Plating Code

Recommended P.C.B Layout(Top Side)
 (PCB BOARD TOLERANCE±0.05)

Full Gold Type	Selective Plated Type Gold Plated on Contact Area Tin Plated on Solder Area	Full Tin Type
00 : Gold Flash	S0: Gold Flash, Tin 100u"	T1 : Tin 100u"
01 : Gold 3u"	S1 : Gold 3u", Tin 100u"	T2 : Tin 200u"
02 : Gold 5u"	S2 : Gold 5u", Tin 100u"	T3 : Tin 150u"
03 : Gold 10u"	S3 : Gold 10u", Tin 100u"	MT: Matte Tin
04 : Gold 15u"	S4 : Gold 15u", Tin 100u"	
05 : Gold 20u"	S5 : Gold 20u", Tin 100u"	
06 : Gold 30u"	S6 : Gold 30u", Tin 100u"	



ElectronAix

TOLERANCE:	PROJECTON		TITLE:
ANGLE ±3'	DATE	04-14-08'	1.27mm Pin Header Single Row SMT Type H=1.0mm
X.XXX ±0.15	DRAWN	JXL	PART NO:
X.XX ±0.25	CHECKED		PC10-SXXMXX-B-D-W-X-X
X.X ±0.40	APPROVED		REV: A
X. ±0.50			UNIT: mm
			SCALE: 2:1
			SIZE: A4