

REVISION DATA				
SYM	ECN	DESCRIPTION	DATE	APPROVED

NOTES:  
 Current Rating:3.0AMP  
 Contact Resistance:20mΩ max  
 Withstand Voltage:500V AC/DC  
 Insulation Resistance:1000MΩ min  
 Operation Temperature:-40°C to +105°C

Contact Material:Brass  
 Contact plating:Au or Sn Over Ni  
 Insulator Material:PA6T+30%GF(UL94V-0)

**HOW TO ORDER**

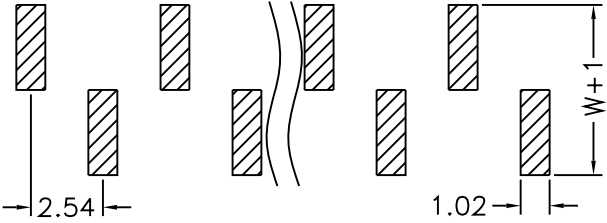
**PA - S XX M XX - B-D-W - X - X - X**

No. of Pins per Row:01-40Pins  
 Board Lock  
 0 : W/O Locating Peg  
 1 : With Locating Peg  
 Package Type:  
 A:Tray  
 B:Tube  
 C:W/Cap in Tube  
 D:W/o Cap in Tape & Reel  
 E:W/Film in Tube  
 F:W/Film in Tape & Reel  
 R:With Cap in Tape & Reel  
 G:Bag

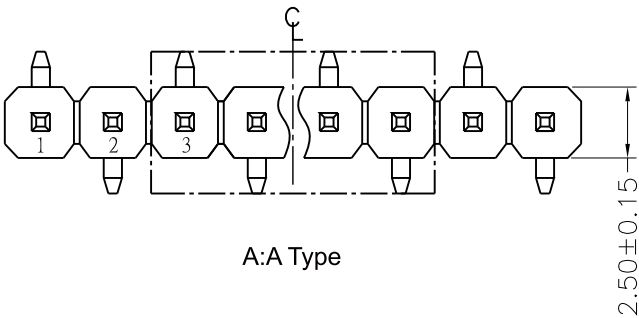
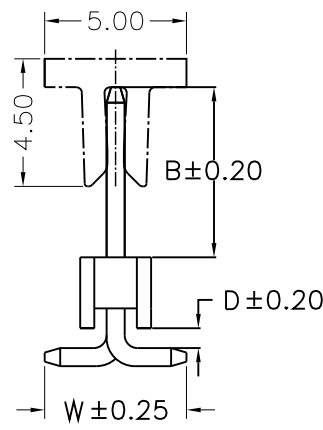
Full Gold Type	Selective Plated Type Gold Plated on Contact Area Tin Plated on Solder Area	Full Tin Type
00 : Gold Flash	S0 : Gold Flash, Tin 100u"	T1 : Tin 100u"
01 : Gold 3u"	S1 : Gold 3u", Tin 100u"	T2 : Tin 200u"
02 : Gold 5u"	S2 : Gold 5u", Tin 100u"	T3 : Tin 150u"
03 : Gold 10u"	S3 : Gold 10u", Tin 100u"	
04 : Gold 15u"	S4 : Gold 15u", Tin 100u"	
05 : Gold 20u"	S5 : Gold 20u", Tin 100u"	
06 : Gold 30u"	S6 : Gold 30u", Tin 100u"	

**ElectronAix**

TOLERANCE:	PROJECTON		TITLE:
ANGLE ±3'	DATE	03-31-08'	2.54mm Pin Header Single Row SMT Type
X.XXX ±0.15	DRAWN	JXL	PART NO:
X.XX ±0.25	CHECKED		PA-SXXMXX-B-D-W-X-X-X
X.X ±0.40	APPROVED		REV: A UNIT: mm SCALE: 2:1 SIZE: A4
X. ±0.50			



Recommended P.C.B Layout(Top Side)  
 (PCB BOARD TOLERANCE±0.05)



A:A Type

